

Antenna Mounts

For Omni-Directional Antennas



SIDE MOUNTS & ACCESSORIES

Hardware & Accessories

ASP989 Downtilt Brackets:

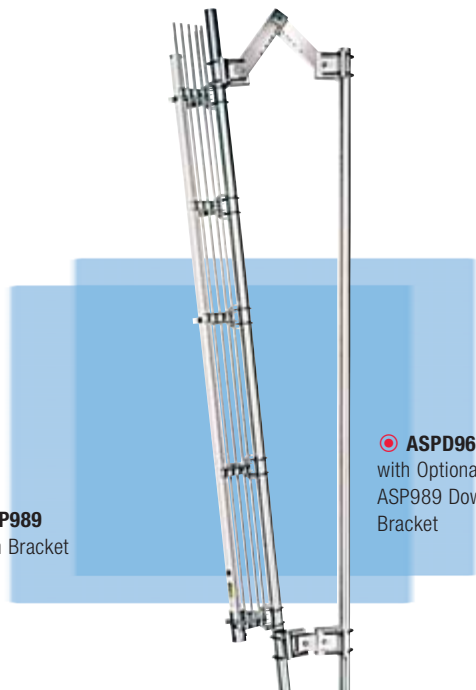
- **Versatile** — Allows maximum signal to be directed downward for null-fill or elimination of interference at the horizon.
- **Field Adjustable** — From 0° to -10° in 0.5° increments (ASP989). Mounts on tower legs 2.375" (60.33 mm) to 4.5" (114.3 mm) O.D.
- **Universal** — Can be used with any directional antenna that can be mounted on a tubular mast measuring 2.375" (60.33 mm) to 4.5" (114.3 mm) O.D.
- **Rugged** — High strength aluminum scissors clamp and stainless steel hardware.



• ASP989
Top Bracket



• ASP989
Bottom Bracket



• ASP963
with Optional
ASP989 Downtilt
Bracket

MECHANICAL DATA

	ASP989
Clamp Spacing	136" (3.5 m)
Mounting Length	6" (0.152 m) per clamp (2 clamps)
Material	6061-T6 grade aluminum
Net Weight	50 lbs (22.7 kg)
Rated Wind Velocity (RS-329)	168 mph (271 km/h)

ASPR613 Side Mounting Kit:

Optional dual support side mount designed for mounting antennas up to 36" (91.4 mm) away from the tower (based on 18" [457.2 mm] faces) using ASP617 clamps. May be mounted on any square or triangular tower with tubular legs up to 4" (101.6 mm) in diameter or 2.5" (63.5 mm) angle iron and face dimensions from 6" (152.4 mm) to 25" (635 mm).

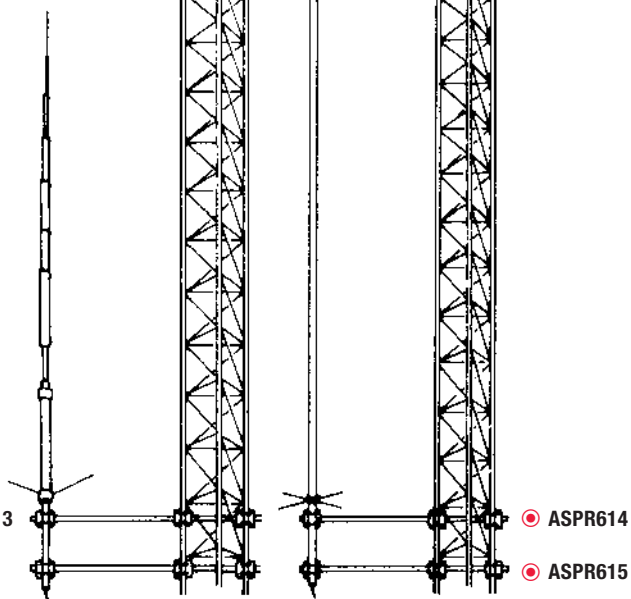
Not recommended for use with ASP685 or ASP705K models in high wind areas. Order ASPR614 or ASPR615.

ASPR614 Side Mounting Kit:

Optional side mount similar to ASPR613, with a fiberglass insulated upper support arm. Used for mounting antennas from 18" (457.2 mm) to 7' (2,133 mm) away from the tower (based on 18" [457.2 mm] faces).

ASPR615 Side Mounting Kit:

Optional side mount, same as ASPR614, used for mounting antennas from 18" (457.2 mm) to 36" (914.4 mm) away from the tower (based on 18" [457.2 mm] faces).



• ASPR613

• ASPR614

• ASPR615