

The dB TripleTree™ antenna systems are designed to be an inconspicuous addition to the natural environment. These environmentally sound features combine to create an antenna system that will meet or exceed municipality standards. If downtilting is desired, choose one of the DECIBEL® variable electrical downtilt models or mechanical downtilt brackets with easy-to-read angle indicators.

dB TripleTree™ for 800 MHz

- Telescoping mast provides maximum flexibility in cell site selection and construction
- Reduces the number of antennas, cables, connectors, construction time, and site rental
- Solves site acquisition problems with a single mast of antennas
- The hoisting eyebolt can be replaced with a hex bolt or brass 8" (203mm) lightning spike (included) for added visual appeal
- Only 20" (508 mm) in diameter

dB TripleTree™ for 1800 MHz

- Telescoping mast provides maximum flexibility in cell site selection and construction
- Reduces the number of antennas, cables, connectors, construction time, and site rental
- Solves site acquisition problems with a single mast of antennas
- The hoisting eyebolt can be replaced with a hex bolt or brass 8" (203mm) lightning spike (included) for added visual appeal
- Only 10" (254 mm) in diameter

• dB TripleTree™ antenna system with (3) 854DGVTESX antennas



• dB TripleTree™ antenna system with (3) 932DG65VTE-M antennas



For 800 MHz

ANTENNA FAMILY	DB854	DB856	DB858
Universal Tree Stand	DB800TREE	DB800TREE	DB800TREE
Mounting Hardware	800TREEKIT	800TREEKIT	800TREEKIT
Height			
Fully Retracted	75.3" (1,913 mm)	75.3" (1,913 mm)	75.3" (1,913 mm)
Fully Extended	135" (3,429 mm)	135" (3,429 mm)	135" (3,429 mm)
Diameter (stand only)			
Top	3.5" (88.9 mm)	3.5" (88.9 mm)	3.5" (88.9 mm)
Bottom	4" (101.6 mm)	4" (101.6 mm)	4" (101.6 mm)
Diameter (w/antennas only)	18.38" (467 mm)	18.38" (467 mm)	18.38" (467 mm)
Weight (stand only)	132 lbs. (59.8 kg)	132 lbs. (59.8 kg)	132 lbs. (59.8 kg)
Wind Load (w/radome + 1/2" ice)			
Fully Retracted	544 lbf (2,420 N) (@ 125 mph)	544 lbf (2,420 N) (@ 125 mph)	544 lbf (2,420 N) (@ 125 mph)
Fully Extended	400 lbf (1,779 N) (@ 80 mph)	400 lbf (1,779 N) (@ 80 mph)	400 lbf (1,779 N) (@ 80 mph)
Max. Wind Speed (w/radome + 1/2" ice)			
Fully Retracted	125 mph (201 km/h)	125 mph (201 km/h)	125 mph (201 km/h)
Fully Extended	80 mph (128 km/h)	80 mph (128 km/h)	80 mph (128 km/h)

Notes:

The telescoping stand adjusts in increments of 6".

Kits may be ordered separately and delivered with instructions for field assembly, or you may request factory assembly of the antennas to the stand by ordering TREEINSTALL.

For extended DB1800TREE applications requiring high wind rating, order DB1800HDTREE. This stand is a fixed dual stack, non-adjustable mast rated at 100 mph (160 km/h).

For 1800 MHz

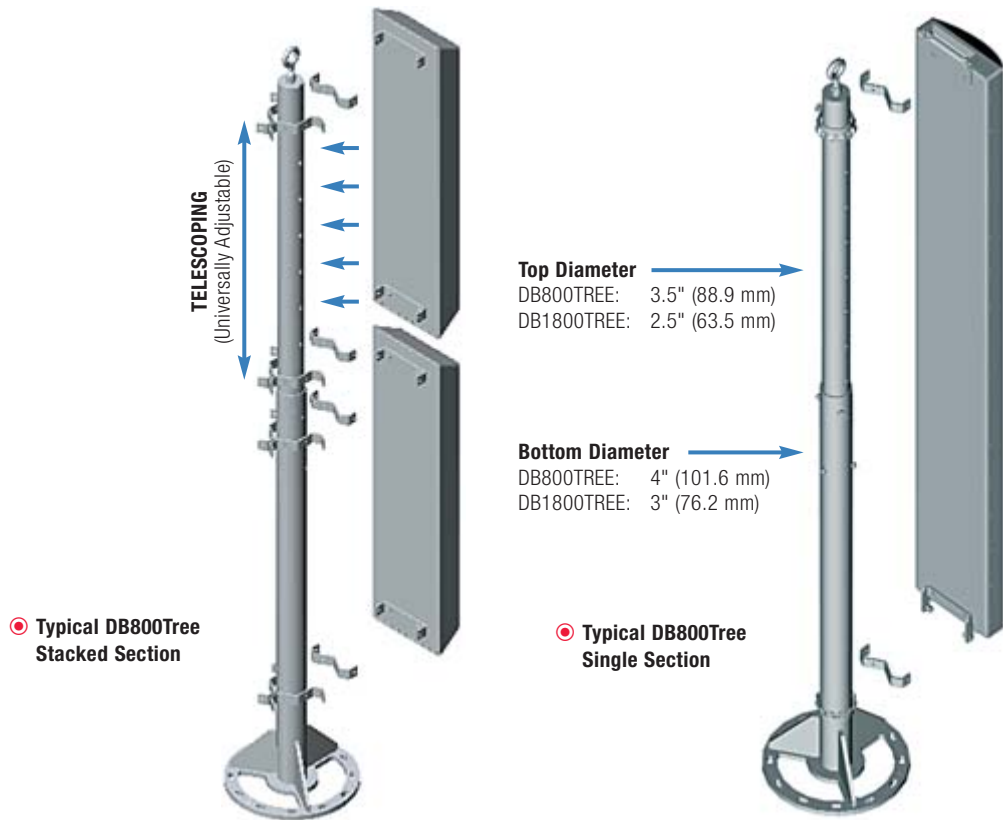
ANTENNA FAMILY	932QDG65	932QDG90	DB931DG90 DB932DG90	DB931DG65 DB932DG65
Universal Tree Stand	DB800TREE	DB800TREE	DB1800TREE	DB1800TREE
Mounting Hardware	800TREEKIT	800TREEKIT	1800TREEKIT	1800TREEKIT
Height				
Fully Retracted	75.3" (1,913 mm)	75.3" (1,913 mm)	87" (2,210 mm)	87" (2,210 mm)
Fully Extended	135" (3,429 mm)	135" (3,429 mm)	159.5" (4,051 mm)	159.5" (4,051 mm)
Diameter (stand only)				
Top	3.5" (88.9 mm)	3.5" (88.9 mm)	2.5" (63.5 mm)	2.5" (63.5 mm)
Bottom	4" (101.6 mm)	4" (101.6 mm)	3" (76.2 mm)	3" (76.2 mm)
Diameter (w/antennas only)	18.12" (460 mm)	18.38" (467 mm)	10.75" (273 mm)	10.75" (273 mm)
Weight (stand only)	132 lbs. (59.8 kg)	132 lbs. (59.8 kg)	111 lbs. (50.3 kg)	111 lbs. (50.3 kg)
Wind Load				
Fully Retracted	544 lbf (2420 N) (@ 125 mph)	544 lbf (2420 N) (@ 125 mph)	303 lbf (1348 N) (@ 117 mph)	303 lbf (1348 N) (@ 117 mph)
Fully Extended	400 lbf (1779 N) (@ 80 mph)	400 lbf (1779 N) (@ 80 mph)	199 lbf (884 N) (@ 70 mph)	199 lbf (884 N) (@ 70 mph)
Max. Wind Speed				
Fully Retracted	125 mph (201 km/h)	125 mph (201 km/h)	117 mph (188 km/h)	117 mph (188 km/h)
Fully Extended	80 mph (128 km/h)	80 mph (128 km/h)	70 mph (112 km/h)	70 mph (112 km/h)

Notes:

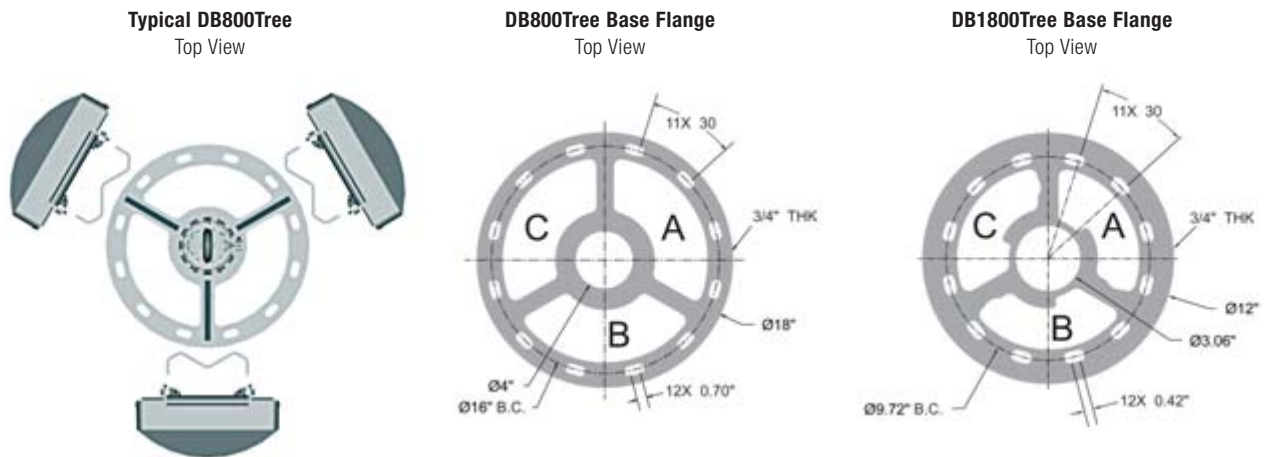
The telescoping stand adjusts in increments of 6".

Kits may be ordered separately and delivered with instructions for field assembly, or you may request factory assembly of the antennas to the stand by ordering TREEINSTALL.

For extended DB1800TREE applications requiring high wind rating, order DB1800HDTREE. This stand is a fixed dual stack, non-adjustable mast rated at 100 mph (160 km/h).



Base Flange Dimensions



Antenna Mounts



DECIBEL® TripleTree™ Configuration Worksheet

Hardware & Accessories

COMPANY: _____ **DATE:** _____

CONTACT: _____

PHONE: _____ **FAX:** _____

E-MAIL: _____

Please complete the Configuration Worksheet and fax it to Andrew's Customer Support Representatives at (214) 631-4706 or (800) 229-4706. You will receive a written quotation containing pricing and lead time. If you have any questions about this process, please contact Customer Support at (214) 631-0310 or (800) 676-5342.

Andrew's dB TripleTree™ stands are ideal for mounting configurations of one-to-two sets of vertically mounted antennas.

If you prefer Andrew to provide all required jumpers, please fill out the following diagram.

STAND: DB800TREE DB1800TREE

ANTENNA MODELS AND POSITION:

Lower Models:

Sector A	
Sector B	
Sector C	

Upper Models, if stacked:

Sector A	
Sector B	
Sector C	

A = _____"

HARDWARE KITS:

800TREEKIT (1 per antenna)
Optional Downtilt: DB5083

1800TREEKIT (1 per antenna)
Optional Downtilt: DB5098

QTY

OPTIONAL EXTERIOR RADOMES:

800RADOME06 (Fully Retracted)

800RADOME11 (Fully Extended)

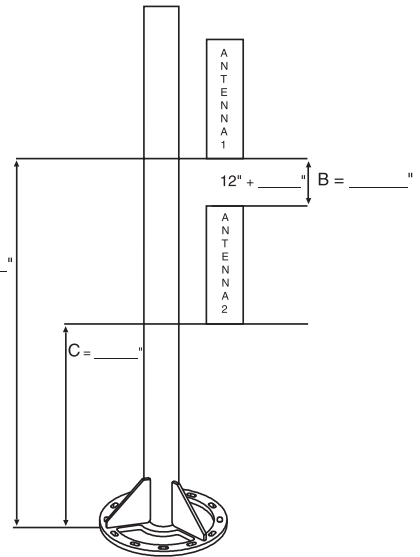
1800RADOME07 (Fully Retracted)

1800RADOME13 (Fully Extended)

QTY

ASSEMBLY:

Field Factory: TREEINSTALL



Notes:

1. These stands and brackets are designed for Andrew antennas.
2. The stacked 800TREE's require two additional mast collars, part number 081696-001 and one spacer, part number 081923-001.
3. Jumpers are standard 1/2" foam, DIN Male-to-DIN Male. Customers to specify jumper length beyond base flange.
4. Contact Andrew for other configurations.